



INTERGRAPH® I/SECURITY

To successfully protect people, valuable assets, and facilities, security teams must have a high level of situational awareness. Teams achieve this awareness by evaluating sensor and alarm data, and then responding to events based on information from video feeds, access control devices, and more. The data available today is increasing in volume and complexity and is delivered through multiple, vendor-specific administrator and user interfaces. However, security teams need this data to be presented in an easy-to-understand common operating picture to make well-informed decisions for effective response.

Hexagon Safety & Infrastructure's Intergraph® Security (I/Security) product suite provides a security solution that combines elements of sensor monitoring, alarm processing, and video analysis all built on Hexagon's core geospatial processing foundation. This enables security teams to detect the correlation between alarms in a variety of monitoring systems for complete situational awareness. I/Security integrates with Intergraph Computer-Aided Dispatch (I/CAD) systems to support the complete detect-assess-respond security life cycle. The software integrates I/CAD software with alarm systems, access control devices, intrusion detection systems, video management software, and more. It also reduces implementation costs by working with legacy monitoring, alarm, video, and other sensors.

CAD EVENT CREATION

I/Security processes alarms which can automatically or manually create events and alert operators. It defines the location, event type, and relevant information related to the alarm that occurred. The I/Security product suite includes the alarm, access control, and interfaces for communication with external sensor systems. You can also configure interfaces according to your agency's specific needs.

MULTIPLE SECURITY SOLUTION DEPLOYMENT OPTIONS

I/Security Framework Server is the foundation supporting the various modules of the I/Security product suite. It provides the platform for integrating data from a variety of systems and sensors, and fusing that data into a common operating picture you can monitor and act upon. I/Security offers a choice of clients – the desktop I/Security Command Center® and the web-based I/Security Command Portal®. The two can also work together to create a comprehensive security solution.

I/SECURITY COMMAND CENTER

I/Security Command Center delivers complete situational awareness in a desktop-based platform that is perfect for large, enterprise-level deployments and organizations with strict security requirements that prohibit the use of web-based applications. This application brings a robust and fully integrated, map-based common operating picture to your users' desktop that includes a nearly unlimited number of sensors, alarms, access control devices, cameras, and radar systems.

You can also integrate additional products to enhance your system. For example:

- **I/AlarmPlus Desktop** – Monitors and interacts with alarms reported by I/Security Framework. These include tabular alarm displays, as well as integrated map-based displays using the geospatial components.
- **I/Sensor Desktop** – Monitors and interacts with moving objects tracked by I/Security Framework, typically via interfaces with sensors such as radar, RFID, intelligent video, or other sensors capable of detecting and reporting the location of moving objects of interest.



- **I/Sight Desktop** – Displays and controls live and recorded video through a variety of video management systems.

Used together, these products contain the functionality, interfaces, and tools for rapid configuration, providing a shortcut to system development and a fast track to implementation of a comprehensive security or monitoring solution.

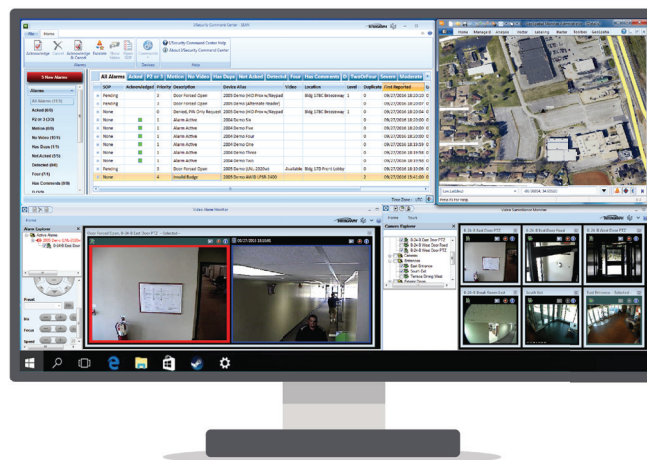
I/SECURITY COMMAND PORTAL

I/Security Command Portal brings a simple, modern user interface to security operators to help them perform complete alarm life cycle workflows, including escalating events to I/CAD for dispatch. It takes advantage of web services to deliver remote connectivity to security management teams, enabling them to monitor and oversee multiple remote facilities from anywhere in the world.

I/SECURITY ADMINISTRATION UTILITY

To support system configuration after product installation, I/Security includes a flexible administration utility. This utility provides a gateway to six individual tools – all designed to administer the primary functional areas of your security system. These tools include:

- **Network** – Configure the servers and workstations, including host machines and communication servers, for the security system. Once these items are configured, you can initialize them and form relationships as required.
- **Adapters** – Arrange and initialize any pre-loaded or customized interfaces used by the security system.
- **Devices & Alarms** – Customize a variety of hardware components. These include vendor, type, commands, codes, user interface settings, devices, and device visibility.
- **Video** – Construct your video server, cameras, camera groups, and camera visibility. This tool requires the I/Sight video product for full functionality.
- **Users, Groups & Roles** – Establish users, groups, roles, and permissions from I/CAD in the security system.



I/Security Command Center provides the comprehensive integration of alarm, map, and video data.



I/Security Command Portal supports the alarm life cycle workflow through an easy-to-use browser interface.

About Hexagon Safety & Infrastructure

Hexagon Safety & Infrastructure provides mission-critical and business-critical solutions to governments and service providers. A global leader, proven innovator, and trusted partner, our software and industry expertise help improve the lives of millions of people through safer communities, better public services, and more reliable infrastructure. Visit hexagonsafetyinfrastructure.com.

Hexagon Safety & Infrastructure is part of **Hexagon** (Nasdaq Stockholm: HEXAB; hexagon.com), a leading global provider of information technologies that drive productivity and quality across geospatial and industrial enterprise applications.