

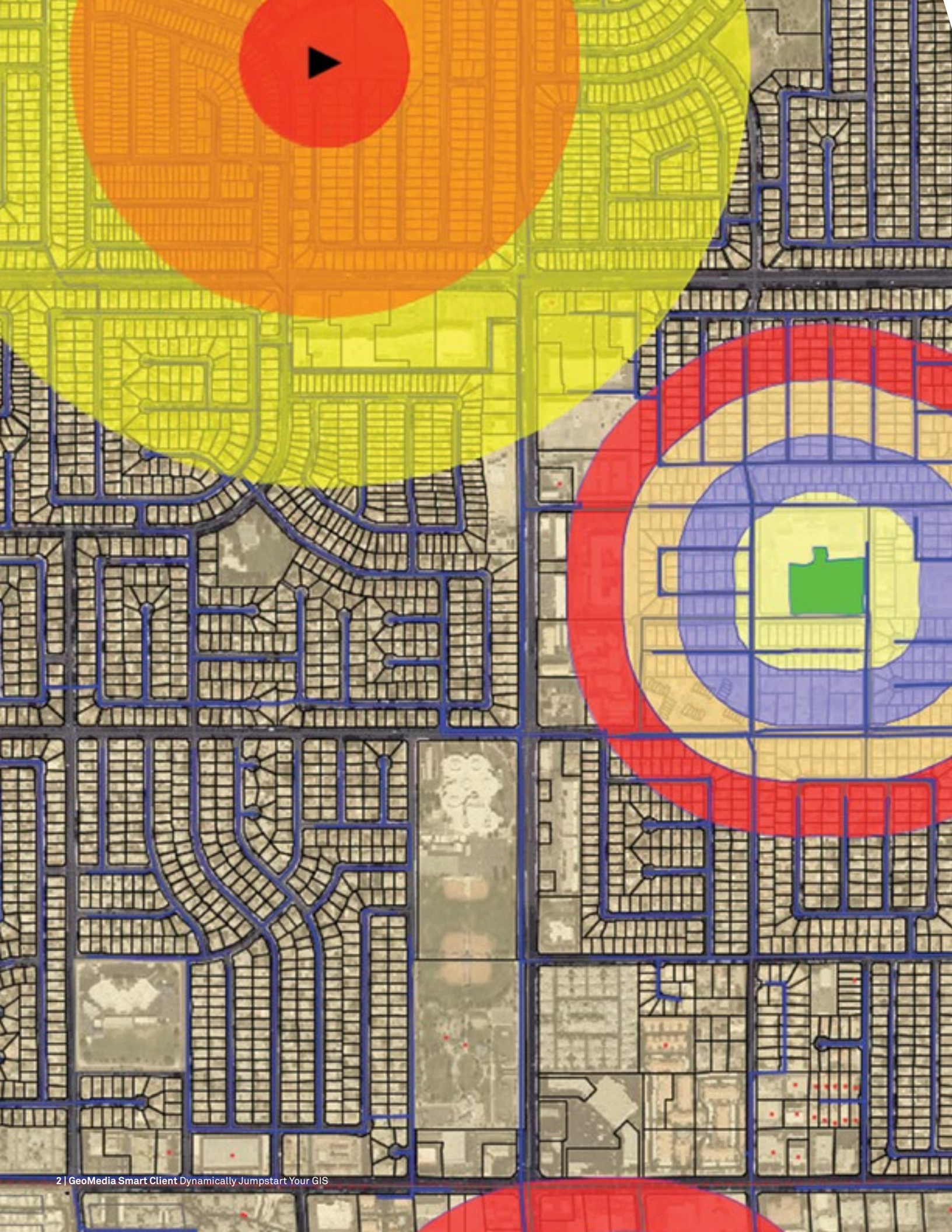


# GEOMEDIA<sup>®</sup> SMART CLIENT

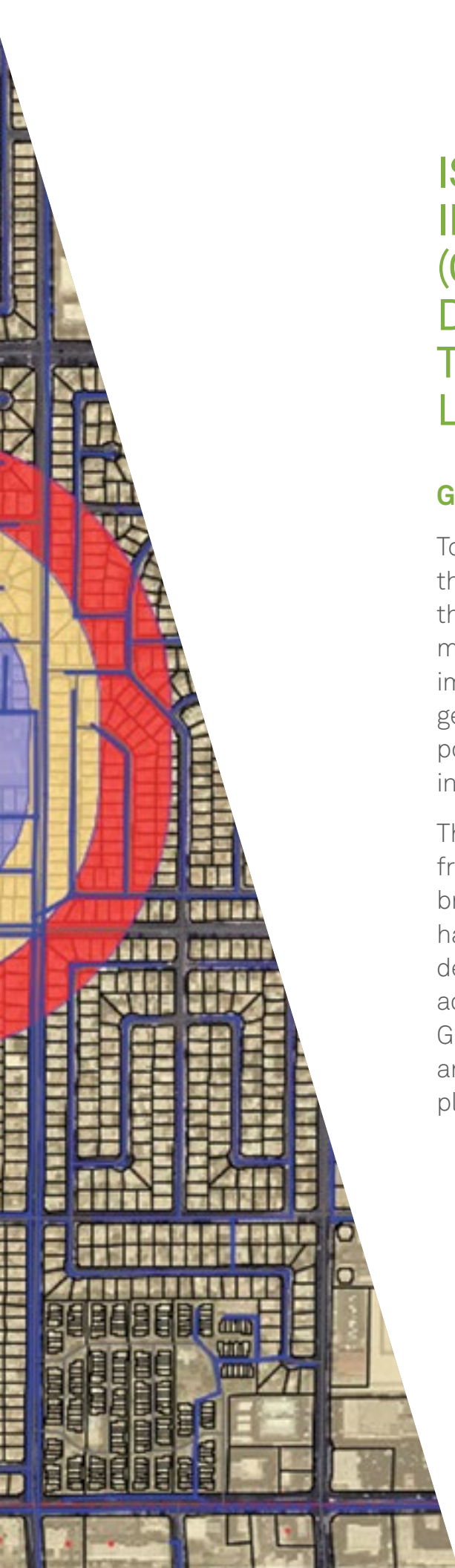
DYNAMICALLY JUMPSTART YOUR GIS











# IS YOUR GEOGRAPHIC INFORMATION SYSTEM (GIS) GRIDLOCKED IN A DEPARTMENT? LIMITED TO POWER USERS? LOCKED AWAY?

## GET OUT OF THE GRIDLOCK

Today, stakeholders across your organization know the value of geographic information, but often lack the expertise to run a traditional desktop GIS. Online maps delivered by a web GIS are helpful, but these implementations often do not support the specific geospatial workflows required. Today, users need the power of GIS not as a horizontal technology, but delivered in vertical, market-focused workflows.

The vast majority of people who could really benefit from geospatial data need more than what a lightweight, browser-based web map can deliver. Likewise, they don't have the time or expertise to learn a technically demanding desktop environment. These users are eager to geospatially accelerate their business workflows and ignite the power of GIS. This requires a new approach: work outside the passive and limiting departmental deployments of the GIS that have plagued organizations for decades.



Define disconnected workflows that will enable end users to capture and edit attributive and spatial data while offline from the internet. Project-based conflict handling can be added through the workflow definitions.

## THE SMART GIS

The enterprise-wide “smart GIS” eliminates the disparity between the status quo and what a GIS needs to be. A smart GIS is the perfect GIS to:

- Connect and equip ALL users with the power of geography
- Break down the walls that have resulted in closed, passive, and uninspiring one-dimensional systems
- Provide a platform for a world where geographic information is the key ingredient to jumpstarting business critical workflows and understanding our changing earth

GeoMedia® Smart Client empowers individuals and departments to collectively ignite your dynamic GIS. Geographic changes are easily and interactively implemented across an enterprise-wide smart GIS, seamlessly integrating

into customized workflows. You determine these vibrant geospatial business workflows, providing a level of sophistication not supported by legacy out-of-the-box horizontal software products.

GeoMedia Smart Client is offered within the PLATFORM SUITE of the Power Portfolio. The Platform Suite enables you to create your own unique application on top of a solid foundation of powerful geospatial functionality. Supported by robust toolkits, detailed instructions, and interactive developer communities, you can build custom web, mobile, and other smart enterprise solutions.

## DISCOVER THE POWER OF GEOGRAPHY

GeoMedia Smart Client is for users interested in harnessing the power of geography and applying it to build a smarter world. Your end users will leverage advanced geospatial functionality via simple-to-use map-based tools, streamlining their processes and honing their expertise doing their job smarter. Workflow optimization and intuitive web editing will be a reality embraced across your organization.

## BENEFITS

### IMPLEMENT ONCE, USE MANY TIMES

GeoMedia Smart Client meets the needs of multi-disciplinary operations, affordably enabling users in an organization to access and use rich geospatial data in their business processes. This provides a forward-thinking alternative to heavy desktop technology-centric products and expensive service providers with one-off, unimaginative (and disconnected) offerings. Instead of building customized workflows for each workgroup within an organization using different vendors and tools, GeoMedia Smart Client unites this technology. With GeoMedia Smart Client, you create a single deployment that can be configured for an unlimited number of applications – making it the perfect GIS for a smarter organization.



In GeoMedia Smart Client, combine tailor-made attribute queries with client side spatial analytics to glean task-specific information from the data.

## POWER TO THE PEOPLE

Historically, the desktop GIS was intended for the advanced and technical GIS professional. Later, web GIS was created to provide access to individuals requiring static maps with limited portrayals of geography. Consequentially, these two models of deployment have alienated potential users between or outside these personas.

Today, there are a growing number of smart individuals who recognize the power of geographic information and its vitality in driving business decisions; people need a smart GIS. GeoMedia Smart Client is an inclusive solution that leverages configurable workflows to augment and deliver geospatial tools in ways that meet the needs of these smart users. At GeoMedia Smart Client's core are workflow optimization and web editing capabilities, enabling your organization to develop efficient, customer-specific workflows to empower your smart users. Providing the utmost flexibility, these workflows are sustainable and support ongoing, long-term business processes.

## COMPLETE YOUR GIS WITH A SMART GIS

GeoMedia Smart Client completes your existing desktop GIS by opening your geospatial assets to a larger audience. Geospatial datasets and maps produced from a desktop GIS feed a Smart GIS with content, while leveraging a web GIS's advantages in delivering light and application specific solutions to more users. With GeoMedia Smart Client, individuals across your organization can create data, maps, reports, and even charts and graphs for their projects, rather than having to rely on a GIS specialist or to outsource this work. Advanced geospatial functionality is fused into your core business workflows, enabling a wide audience to capture and edit data, use snapping tools, and perform redlining and geospatial queries. This includes the ability to define workflows that drive the user interface (GUI) to guide users step-by-step and provide a means to collect, update, and validate your data. Ultimately, this enables non-GIS experts to exploit advanced GIS functionality in a smart way!

## REDUCES COST AND COMPLEXITY

GeoMedia Smart Client's technology removes many of the IT support overheads associated with installing and supporting desktop and browser-based products. A self-configuring and updating "smart client" reduces the cost in buying and maintaining underutilized desktop GIS licenses (and associated hardware). Other savings come from the following:

- **Tying geospatial data into essential business workflows enables the creation of sustainable, on-going processes that satisfy the entire organization**
- **Using intelligent geospatial data caching provides a huge boost to performance levels, and reduces the volume of data transferred from the server to a minimum**
- **An easy and intuitive interface reduces training costs**



**GeoMedia Smart Client's technology removes many of the IT support overheads associated with installing and supporting desktop and browser-based products.**





Display and print complex and high-quality cartographic maps based on the OGC standard Symbology Encoding (SE) and client-side vector data.

## COMPLIMENTS OTHER GEOSPATIAL PRODUCTS

GeoMedia Smart Client can be used as a standalone solution, but is greatly enhanced when used in conjunction with GeoMedia WebMap to provide access to a wider variety of data types, including web services and on-the-fly coordinate transformation capabilities. Integrating GeoMedia WebMap enables Smart Client to use Open Geospatial Consortium (OGC®) web services (WMS, WFS) and expands direct file support by 40 formats. The additional vector data support includes shapefiles, MS Access, MapInfo, DWG, DXF, and DGN; and expanded raster access support includes COT and ECW. GeoMedia Desktop can also be used for the initial setup of the Smart Client project, in lieu of using the Smart Client administration console. With GeoMedia Desktop, you can easily access or add new features, define scale dependencies, register raster and vector data, or use other expert functionality.

Taking advantage of the rapid image delivery capabilities of ERDAS APOLLO, raster backdrops based on the fast ECWP streaming protocol may be directly consumed into GeoMedia Smart Client. ECWP provides superior image delivery performance when compared to any other image serving solution on the market, and substantially reduces the volume requirements of the client cache.

## CORE FEATURES

### BUSINESS LOGIC AND EFFICIENT WORKFLOWS

At GeoMedia Smart Client's core is a highly configurable rules and workflow engine for implementing life-cycle workflows, feature-level access control, data validation and behavior, and integration to other systems. A simple user interface guides users with task-specific forms and workflows, increasing productivity and data quality. The coordinated access, data models, and lifecycles increase information sharing and re-use. This avoids the inefficiencies, errors, and risks that usually come with different departments working on their own silos of data.

### HIGH-END GEOSPATIAL FUNCTIONALITY

GeoMedia Smart Client fuses geospatial technology into your core business workflows, and supports advanced geospatial functionality, such as capturing and editing data, snapping tools, redlining, and also high-end geospatial queries. Process experts can predefine reports, forms, and plot layouts so that non-GIS experts simply enter their information. Vector data support includes read/write from Oracle® (10g and higher), Microsoft® SQL Server® (2008 and higher), and PostgreSQL (9.0 and higher) databases, all using supporting spatial extensions.

### SIMPLE DEPLOYMENT AND MANAGEMENT

Based on standard Java Web Start technology, GeoMedia Smart Client is self-configuring. This provides a high-performance client platform compatible with most major operating systems (Windows®, LINUX, Mac, etc.) without depending on third-party products or the administrative issues that arise from browser versions and settings or operating system compatibilities. GeoMedia Smart Client communication between the client and application servers is entirely based on Web services using Simple Object Access Protocol (SOAP).



Create familiar, practical workflows in GeoMedia Smart Client 2016. Create recognizable forms, applying your company look-and-feel.

## PRODUCTS

GeoMedia Smart Client is available in three product tiers to complement a broad range of customers – from a small business with few users doing simple vector-editing, to large, multi-disciplinary environments supporting multiple business workflows across various departments.

### GEOMEDIA SMART CLIENT ESSENTIALS

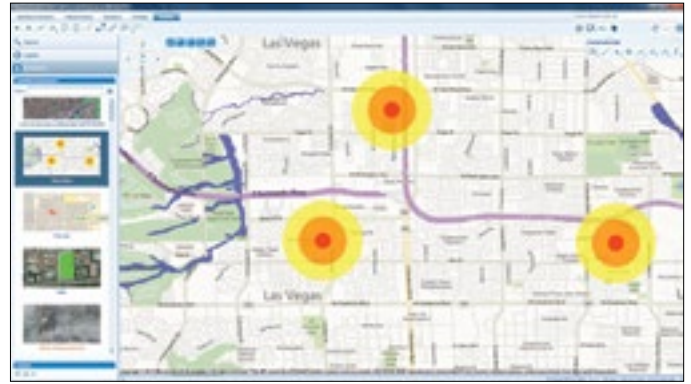
Organizations can provide high-end vector redlining functionality plus support for an unlimited number of users to display raster and vector maps, analyze and query data, print, and utilize measurement and dimensioning functions. Vector database support includes direct capability to read Oracle (10g and higher), Microsoft SQL Server (2008 and higher), and PostgreSQL (9.0 and higher), and Raster format support includes TIFF, GeoTIFF, JPG, and PNG for raster data. Advanced client and server caching is provided for both raster and vector data, ensuring high performance—even in a disconnected mode.

### GEOMEDIA SMART CLIENT ADVANTAGE

The additional Workflow Manager – Runtime module enables customers to utilize predefined business process workflows, edit attributes or capture and change spatial data on the web client, and push changes back to the server database, including Oracle (10g and higher), Microsoft SQL Server (2008 and higher), and PostgreSQL (9.0 and higher).

### GEOMEDIA SMART CLIENT PROFESSIONAL

For those customers that want to define their own workflows or modify existing ones, this tier of GeoMedia Smart Client includes Workflow Manager – Editor. This enables an organization to develop its own workflows or revise the structure, process, and forms of current ones. Furthermore, organizations can extend insightful decision-making to even more interested people by delivering simple maps configured directly from GeoMedia Smart Client to the browser and public facing websites.



GeoMedia Smart Client 2016 displays bookmarks with thumbnails, making it very easy to choose the right map content and spatial area.



Efficient map reading hinges upon unique and clear styles. GeoMedia Smart Client 2016 supports display and printing of complex and high quality cartographic maps based on the OGC standard Symbology Encoding (SE).



GeoMedia Smart Client provides powerful client-side large scale printing, including rotated views, legend definitions and predefined symbology.

## ABOUT POWER PORTFOLIO

The Power Portfolio from Hexagon Geospatial combines the best photogrammetry, remote sensing, GIS and cartography technologies available. Flowing seamlessly from the desktop to server-based solutions, these technologies specialize in data organization, automated geoprocessing, spatial data infrastructure, workflow optimization, web editing, and web mapping.

The Platform Suite enables you to efficiently build and deploy smart solutions that fit your needs.



## ABOUT HEXAGON GEOSPATIAL

Hexagon Geospatial helps you make sense of the dynamically changing world. Known globally as a maker of leading-edge technology, we enable our customers to easily transform their data into actionable information, shortening the lifecycle from the moment of change to action. Hexagon Geospatial provides the software products and platforms to a large variety of customers through direct sales, channel partners, and Hexagon businesses. For more information, visit [www.hexagongeospatial.com](http://www.hexagongeospatial.com) or contact us at [marketing@hexagongeospatial.com](mailto:marketing@hexagongeospatial.com).

Hexagon Geospatial is part of Hexagon, a leading global provider of information technologies that drive quality and productivity improvements across geospatial and industrial enterprise applications. Hexagon's solutions integrate sensors, software, domain knowledge and customer workflows into intelligent information ecosystems that deliver actionable information, automate business processes and improve productivity. They are used in a broad range of vital industries. Hexagon (Nasdaq Stockholm: HEXA B) has more than 15,000 employees in 46 countries and net sales of approximately 3.1bn USD. Learn more at [hexagon.com](http://hexagon.com).

© 2016 Hexagon AB and/or its subsidiaries and affiliates. All rights reserved. Hexagon and the Hexagon logo are registered trademarks of Hexagon AB or its subsidiaries. All other trademarks or servicemarks used herein are property of their respective owners. Hexagon Geospatial believes the information in this publication is accurate as of its publication date. Such information is subject to change without notice.