



IMAGE COMPRESSION IN ERDAS IMAGINE®

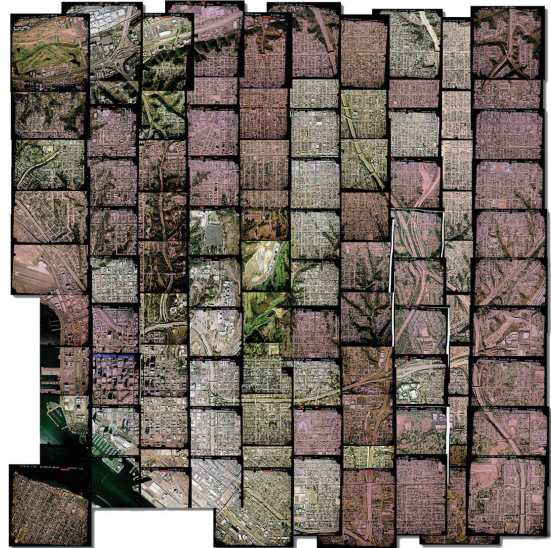
ERDAS IMAGINE includes the fastest image compressor in the world

ERDAS IMAGINE® features the world's leading image compression technologies, integrating the preeminent compression technologies previously existing in ERDAS IMAGINE with those of ERDAS ER Mapper and ERDAS ECW/JP2 SDK. This powerful compression engine enables creation of up to 65,535 color bands (layers) for both ECW and JPEG2000, and includes the ability to generate supported NITF compression formats. Following is an outline of the image compression capabilities available in each of tier of ERDAS IMAGINE.

IMAGINE ESSENTIALS®

IMAGINE Essentials® creates compressed files using Virtual Mosaic and Export functions (single or batch). Some file formats may be written directly from processing functions. Compression capabilities in IMAGINE Essentials include:

- ECW from input output files up to 250 Gpixels
- JPEG2000 from input output files up to 250 Gpixels
- MrSID from input files up to 50 MB (with add-on MrSID encoders available to extend the limit to 500 MB or unlimited)
- JFIF (JPEG) output files up to 65,535 rows and columns
- TIFF with JPEG compression output file up to 4 GB
- TIFF with LZW compression output file up to 4 GB
- TIFF with Packbits compression output file up to 4 GB
- BigTIFF with JPEG compression output file > 4 GB
- BigTIFF with LZW compression output file > 4 GB
- BigTIFF with Packbits compression output file > 4 GB
- ERDAS IMAGINE DR-RLE output file up to 2 GB



Before and After
 Before mosaicking and compression: Multiple images and 10GB of data
 After: 1 Image and only 500MB of data

IMAGINE ADVANTAGE®

IMAGINE Advantage® includes all the image compression capabilities featured in IMAGINE Essentials, plus:

- Multi-core batch compression (up to 4 processes per IMAGINE Advantage or ERDAS Engine license)
- Seamless mosaic generation in the MosaicPro tool
- Many image processing functions
- ECW from input/output files up to 500 Gpixels
- JPEG2000 from input/output files up to 500 Gpixels
- CADRG, unlimited input and output file size
- CIB, unlimited input and output file size

IMAGINE PROFESSIONAL®

IMAGINE Professional® includes all the image compression capabilities featured in IMAGINE Essentials and IMAGINE Advantage, plus:

- ERDAS ER Mapper compression capabilities
- ECW from an unlimited input output size
- JPEG2000 from an unlimited input output size



Hexagon Geospatial helps you make sense of the dynamically changing world. Known globally as a maker of leading-edge technology, we enable our customers to easily transform their data into actionable information, shortening the lifecycle from the moment of change to action. Hexagon Geospatial provides the software products and platforms to a large variety of customers through direct sales, channel partners, and Hexagon businesses, including the underlying geospatial technology to drive Intergraph® Security, Government & Infrastructure (SG&I) industry solutions. Hexagon Geospatial is a division of Intergraph® Corporation.

For more information, visit www.hexagongeospatial.com.
Contact us at marketing@hexagongeospatial.com.

Intergraph® Corporation is part of Hexagon (Nordic exchange: HEXA B). Hexagon is a leading global provider of design, measurement and visualisation technologies that enable customers to design, measure and position objects, and process and present data.

Learn more at www.hexagon.com.