



I/NETVIEWER

Intergraph®'s I/NetViewer is a low-cost and easily managed solution that gives first responders and security personnel secure access to information within Intergraph's command-and-control system. Using a web-browser, users can access live operational information and search for historical data on incidents and resources. A refreshed user interface increases workflow productivity, reduces training time, and facilitates quicker, smarter decision-making.

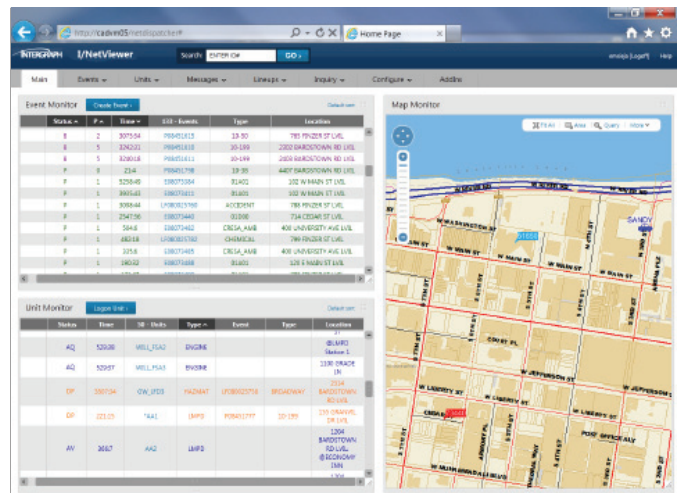
I/NetViewer gives users outside the control room or emergency operations center (EOC) a real-time overview of the current operational status – showing active incidents and available resources, both in list form and on a map display. Easy-to-follow hyperlinks provide a drill-down view of detailed information, such as incident remarks, assigned resources, or map location. You can also query the history of responding units, equipment, or a specific location. For example, I/NetViewer can generate the history of a particular responding unit's activities for the past week, or the number of traffic accidents reported during a particular month. Users can also access information to determine who is on duty, what special equipment they have in their vehicles, and any specific skills they may have.

I/NetViewer users can also perform limited operational actions, such as creating and updating incidents, placing a resource in or out of service, updating shift information, or sending a message to

anyone on the system, including mobile users. These capabilities make it ideal for users in an EOC. System flexibility allows you to view information using a variety of browsers and devices.

REAL-TIME MONITORING

I/NetViewer monitors the live status of units and incidents and automatically updates the web-based monitors and map when new information is available or updates occur. This ensures personnel in the field are always working from the latest, most up-to-date information available – enabling faster, smarter decisions.



The I/NetViewer window displays live operational information for optimal situational awareness.

ABOUT INTERGRAPH

Intergraph is the leading global provider of engineering and geospatial software that enables customers to visualize complex data. Businesses and governments in more than 60 countries rely on Intergraph's industry-specific software to organize vast amounts of data to make processes and infrastructure better, safer and smarter. The company's software and services empower customers to build and operate more efficient plants and ships, create intelligent maps, and protect critical infrastructure and millions of people around the world.

Intergraph operates through two divisions: Process, Power & Marine (PP&M) and Security, Government & Infrastructure (SG&I). Intergraph PP&M provides enterprise engineering software for the design, construction, operation and

data management of plants, ships and offshore facilities. Intergraph SG&I provides geospatially powered solutions, including ERDAS technologies, to the public safety and security, defense and intelligence, government, transportation, photogrammetry, and utilities and communications industries. Intergraph Government Solutions (IGS) is a wholly owned subsidiary of Intergraph Corporation responsible for the SG&I U.S. federal and classified business.

Intergraph is a wholly owned subsidiary of Hexagon AB (Nordic exchange: HEXA B). For more information, visit www.intergraph.com and www.hexagon.com.